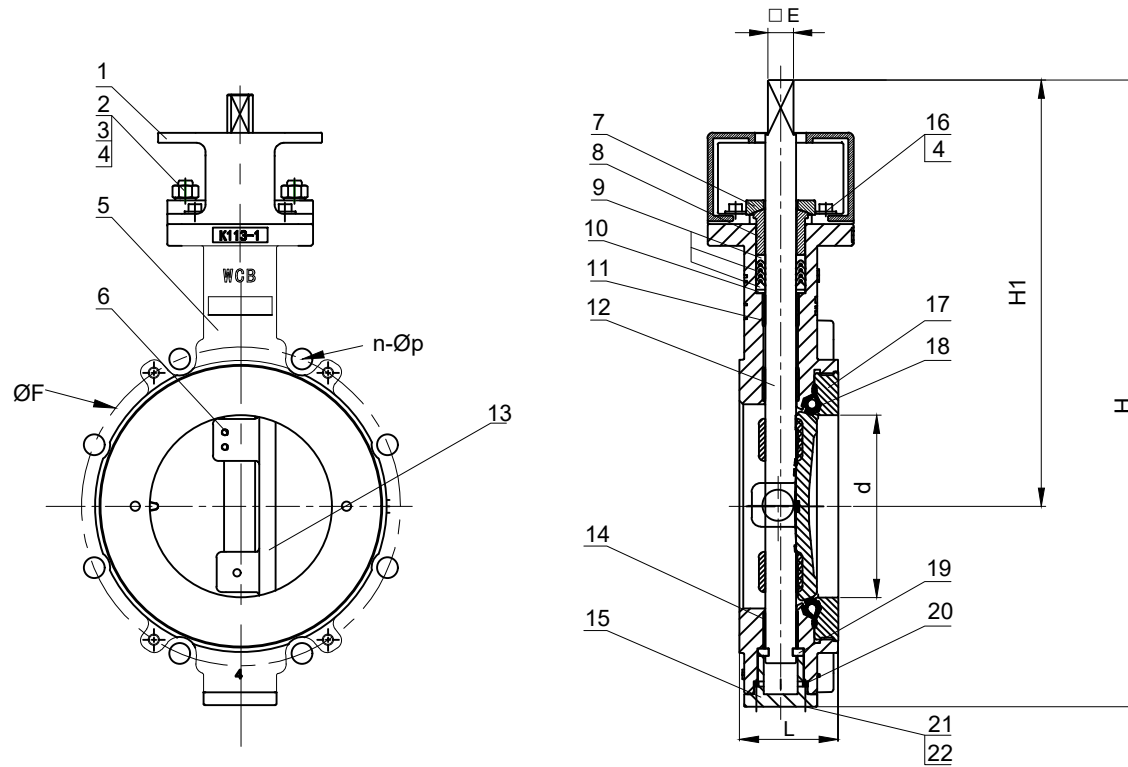


Technical Requirements

- 1 DESIGN AND MANUFACTURE AS PER: API 609
- 2 PRESSURE TEST AS PER: API 598
- 3 END AND END DIMENSIONS AS PER: API 609
- 4 FLANGE DRILLING AS PER: EN1092-2 PN10/16



Size		d	L	H	H1	H2	□ E	ISO 5211	WAFER			
mm	inch								EN1092-2 PN10		EN1092-2 PN16	
									ØF	n-Øp	ØF	n-Øp
DN50	2"	58	44	265	186	16	11	F05/F07	125	4-19	125	4-19
DN65	2 1/2"	62	46.5	268	186	16	11	F05/F07	145	4-19	145	4-19
DN80	3"	75	47.8	295	205	16	11	F05/F07	160	8-19	160	8-19
DN100	4"	100	54.1	347	233	16	14	F05/F07	180	8-19	180	8-19
DN125	5"	118	56.5	373	242	20	14	F05/F07	210	8-19	210	8-19
DN150	6"	150	56.5	418	261	21	17	F07/F10	240	8-23	240	8-23
DN200	8"	198	61.3	472	301	21	17	F07/F10	295	8-23	295	12-23
DN250	10"	246	69.5	540	329	24	22	F07/F10	350	12-23	355	12-28
DN300	12"	296	79	623	370	29	27	F10/F12	400	12-23	410	12-28
DN350	14"	336	92	738	428	29	27	F12/F14	-	-	-	-
DN400	16"	387	101.8	783	453	36	36	F14/F16	-	-	-	-
DN450	18"	438	114	877	527	36	36	F14/F16	-	-	-	-
DN500	20"	489	127	948	558	46	46	F14/F16	-	-	-	-
DN600	24"	565	154	1110	660	46	46	F16/F25	-	-	-	-

22	WASHER	2	SS304/SS316
21	BOLT	2	SS304/SS316
20	O-RING	1	FKM+PTFE
19	RETAINER RING	1	SS304/SS316
18	SEAT	1	TFM1600+VITON,PTFE/RTFE+VITON
17	RETAINER	1	ASTM A351-CF8/CF8M
16	SCREW	4	SS304/SS316
15	END COVER	1	ASTM A351 CF8/CF8M
14	BOTTOM STEM BEARING	1	SS304/SS316+PTFE
13	DISC	1	ASTM A351-CF8/CF8M
12	STEM	1	17-4PH4/SS304
11	TOP STEM BEARING	2	SS304/SS316+PTFE
10	PACKING RETAINER	1	SS304/SS316
9	STEM PACKING	1	PTFE
8	PACKING GLAND	1	ASTM A351 CF8/CF8M
7	GLAND FLANGE	1	ASTM A351 CF8/CF8M
6	DISC PIN	2	SS304/SS316
5	BODY	1	ASTM A351 CF8/CF8M
4	WASHER	6	SS304/SS316
3	NUTS	2	SS304/SS316
2	STUD	2	SS304/SS316
1	ISO BRACKET	1	SS304/SS316
NO.	PART NAME	Qty.	MATERIAL

DRN	wang	WEIGHT		MATERIAL
CHK	LI	SCALE		High Performance Butterfly Valve
APP	KIM	DATE	07/20/2024	
hiwa				CB0001
				REV